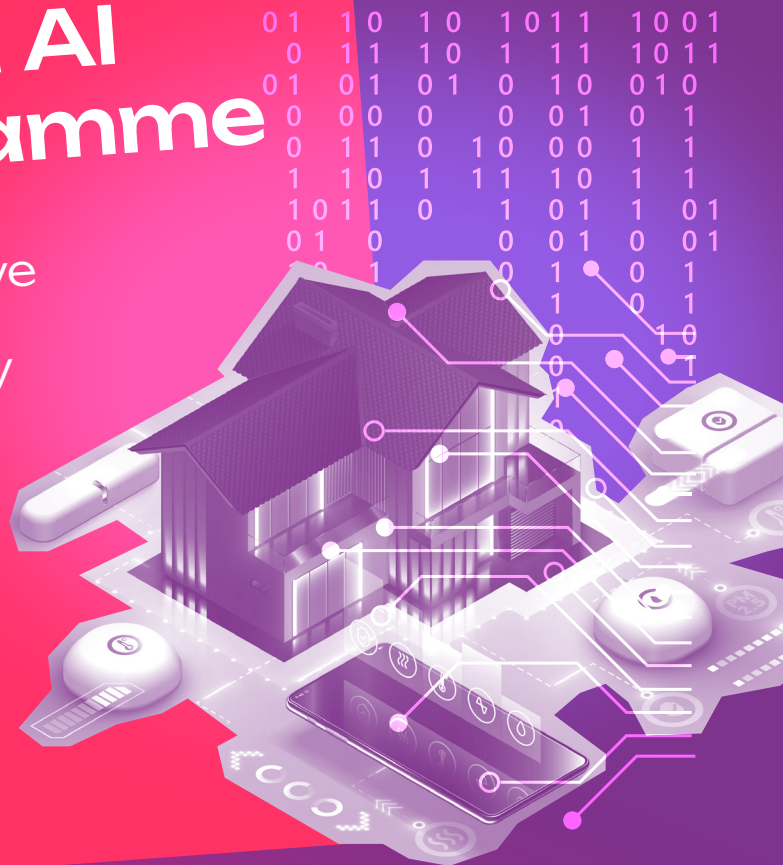


SUSY - The social housing sector's first dedicated AI learning programme

- THE skills programme to give everyone the skills to use AI confidently and responsibly
- Equip teams with practical know-how to apply AI in their day-to-day work and tenant services

Only **£35** per person +VAT*

Disruptive
Innovators
Network



Led by uptakeAI, DINs official
AI education partner

uptake 

*Organisational package starts at £4,200 + VAT for up to 120 people, then costs £35pp

What's on offer?

To make the most of AI, everyone needs the right knowledge, confidence and tools. SUSY, created by our AI education partner uptakeAI, brings exactly that.

- SUSY is a CPD-accredited, interactive learning platform, designed with and for housing professionals.
- It provides practical, role-specific learning to help colleagues use AI responsibly, safely, effectively and confidently.
- SUSY supports teams across all organisational functions
- It gives every part of your organisation tailored learning, helping colleagues work more safely, effectively and ultimately, improve services for your tenants.

SUSY

Dedicated AI learning
platform from uptakeAI



Andrew Whyatt-Sames and Lucy Pitt,
Co-founders, uptakeAI

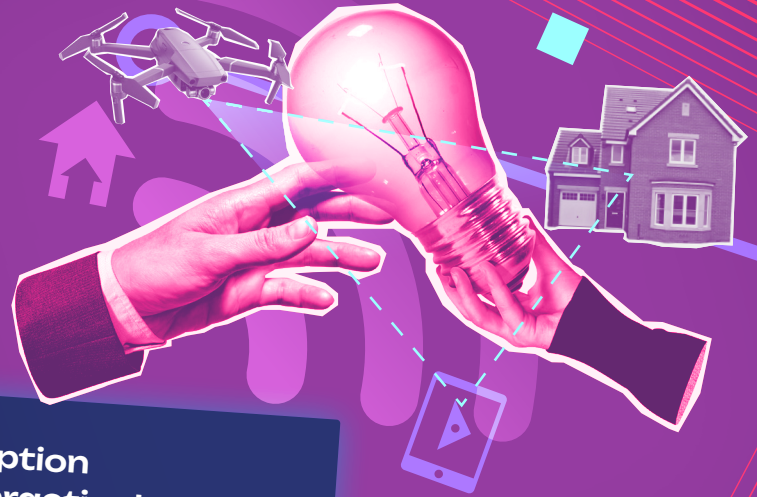
uptakeAI specialises in helping organisations move from curiosity to capability, supporting responsible, confident adoption of AI across all business areas.

What does SUSY do?

SUSY isn't generic AI training. It's housing-focused, practical and people-first - designed to support your corporate strategy and, ultimately, help you deliver for your tenants.

It combines AI adoption frameworks with practical, role-based learning pathways, making AI accessible, ethical and relevant across your entire organisation. Colleagues can focus on the skills they need for their role, while still dipping into other pathways when useful.

Continuously updated to reflect new regulations, tool updates, frameworks and sector developments, your AI learning stays current all year round.



Why choose SUSY?

Over the last two years, uptakeAI has studied what makes AI adoption successful and supported organisations across the social housing sector.

Now SUSY brings that experience online, helping make AI education and responsible adoption possible at scale through:

Partnership approach

Working with leadership, HR, people and culture, and learning and development teams to prepare organisations for responsible and effective AI adoption.

Comprehensive programmes

Live programmes combine AI literacy, ethical use, data security and real-world applications.

People-centred expertise

With a background in organisational psychology, uptakeAI's experts know adoption isn't just about tools; it's about people, culture and confidence.



The key benefits

Stay compliant and ethical

Learning is fully aligned to the EU AI Act, ISO 42001 and housing-sector standards, so you can embed responsible AI practices with confidence.

Make AI real and relatable

With 'have-a-go' modules, team champions and social learning, SUSY helps colleagues see AI as an enabler, not a threat.

Connect people, culture and governance

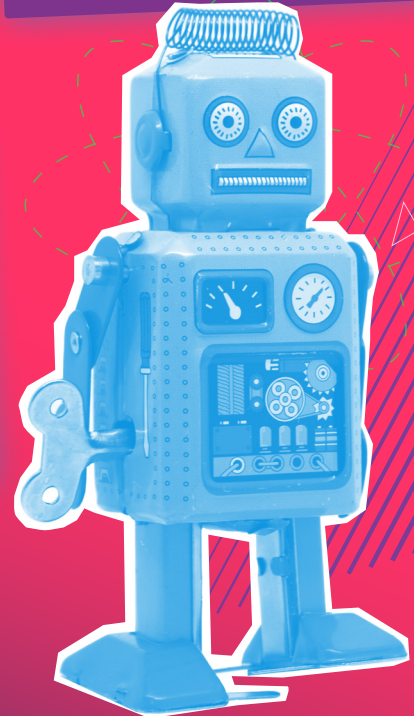
SUSY links leadership, HR, IT/data and compliance; ensuring AI adoption is joined up, ethical and embedded across your whole organisation.

Track progress and readiness

Real-time dashboards show engagement, learning outcomes and organisational AI readiness, helping you evidence your compliance and ROI.

Build confidence and capability

Give everyone, from HR to IT to governance, the skills to use AI safely and effectively in their day-to-day work.



Designed for every team

SUSY supports business functions specific to housing organisations, each with a tailored pathway into responsible AI adoption.

Leadership and strategy

Discover how AI can strengthen your organisation's vision and planning. Learn to use it for decision-making, leadership storytelling and future scenario planning.

Finance and procurement

See how AI helps you spot unusual spending patterns, manage procurement efficiently, track risk and compliance and evidence return on investment.

HR and people

Explore how AI can make recruitment fairer, streamline HR systems, analyse surveys, support onboarding and automate routine policies, all while keeping people at the centre.

Culture and learning

Understand how AI can foster a learning culture, improve communications about change, spark creativity and overcome barriers to engagement.



Designed for every team



Digital and technology

Learn to integrate AI into your digital and IT processes, from troubleshooting and system analysis to managing change across teams.

Customer service and housing

Use AI to improve tenant services, supporting fair use of data, faster case resolution, smarter triage and better service design.

Development and regeneration

Learn how AI can support ethical planning, enhance stakeholder communication, analyse regeneration data and identify potential risks early.

Data, AI and analytics

Build your confidence with data. Learn how to handle it responsibly, create dashboards, design models and use AI tools for smarter problem-solving.

Property and assets

Discover how AI can predict maintenance needs, schedule repairs, track compliance and manage asset data efficiently.

Legal and governance

Understand responsible AI from a compliance point of view. Explore legal scenarios, policy updates and ways to analyse legal data securely and ethically.

Affordable and scalable

DIN members get full access with 30% off, giving your teams everything they need to be AI-ready, safely and affordably.

DIN members **£35* per user +VAT**

Non-members **£50 per user**

*Starting at £4,200 + VAT for up to 120 people



Find out more

This is your chance to prepare your workforce for the future of housing; where AI drives better outcomes for people, processes and communities.

We'd love to show you how it works with a free introduction and trial.

To book, drop a line to **andrea.jolly@disruptiveinnovatorsnetwork.co.uk**

disruptiveinnovatorsnetwork.co.uk